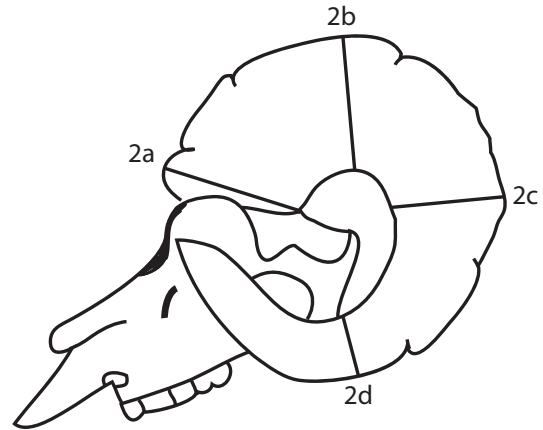
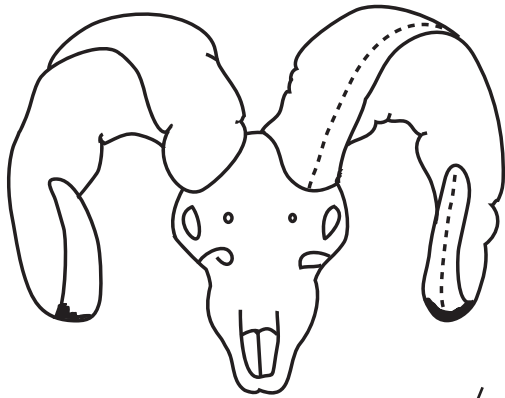


Mountain Hunter Record Book

Instructions for Measuring All Sheep



*Measure to a point in line with horn tip

Instructions

Measurements must be made with a $\frac{1}{4}$ inch wide flexible steel measuring tape to the nearest one eighth of an inch. Enter the fractional figure in eighths, without reduction.

- 1. Length of Horn** is measured from the lowest point in front on outer curve to a point in line with the tip. Do not press tape into depressions. The low point of the outer curve of the horn is considered to be the low point of the frontal portion of the horn, situated above and slightly medial to the eye socket (not the outside edge). Use a straight edge, perpendicular to horn axis, to end measurement on “broomed” horns.
- 2. 2a: Circumference at Base** is measured at a right angle at axis of horn. Do not follow the irregular edge of horn; the line of measurement must be entirely on horn material.
2b-2c-2d: Divide measurement 1 of longer horn by four. Starting at base, mark **both** horns at these quarters (even if the other horn is shorter) and measure circumferences at these marks, with measurements taken at right angles to horn axis.



