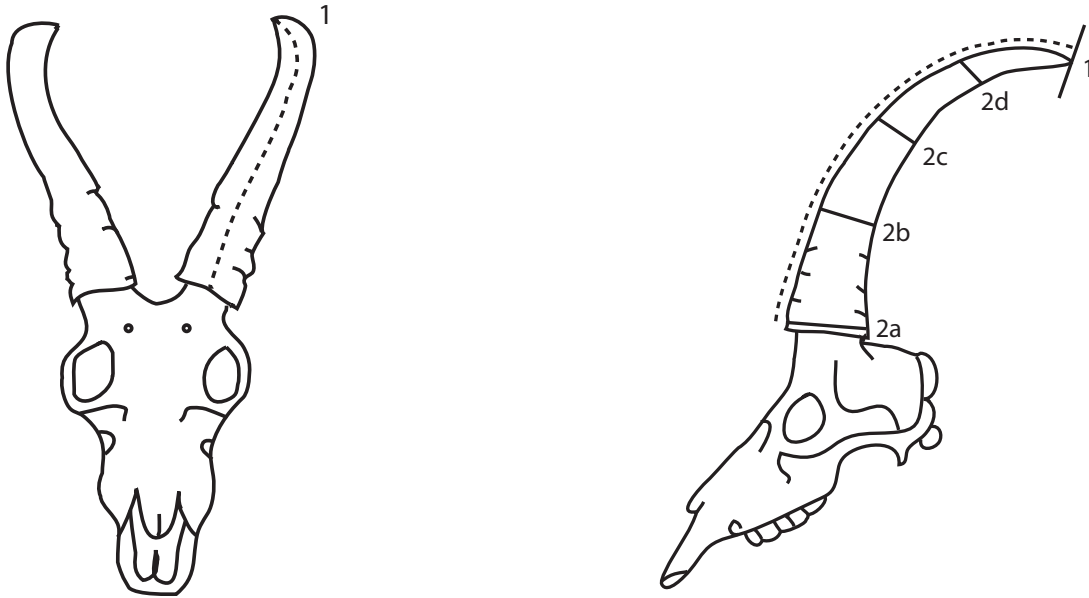


Mountain Hunter Record Book

Instructions for Measuring Mountain Goat



Instructions

Measurements must be made with a $\frac{1}{4}$ inch wide flexible steel measuring tape to the nearest one eighth of an inch. Wherever it is necessary to change direction of measurement, mark a control point and swing tape at this point. Enter the fractional figure in eighths, without reduction.

- 1. Length of Horn** is measured from the lowest point in front over outer curve to a point in line with tip.
- 2. 2a: Circumference of Base** is measured at a right angle to axis of horn. Do not follow irregular edge of horn; the line of measurement must be entirely on horn material.
2b-2c-2d: Divide measurement 1 of longer horn by four. Starting at base, mark **both** horns at these quarters (even if the other horn is shorter) and measure circumferences at these marks, with measurements taken at right angles to horn axis.



